

RIVER BUSINESS TOWER





Who we are

CYRESLAND was established in 2018 and since then has become one of the leading players in the Construction industry in Limassol, Cyprus. We specialize in the provision of high-quality real estate development and Contracting services. Our experienced team of professionals are passionate about creating and delivering innovative solutions to meet the needs of our clients.

Our mission is to engage in issues that are of concern to individuals, families and communities through an uncompromising commitment to create outstanding living, work and leisure environments.



About RIVER BUSINESS TOWER

Discover unparalleled luxury in the heart of Limassol's city center with CYRES Land. Elevate your business presence with our exquisite offices for sale, located on Spyrou Kyprianou Avenue, Limassol.

Spanning four floors, these meticulously designed spaces offer sophistication and prestige, ideal for discerning professionals. Secure your place in Limassol's thriving business landscape today with CYRES Land.

Location: Spyroy Kyprianoy, Limassol

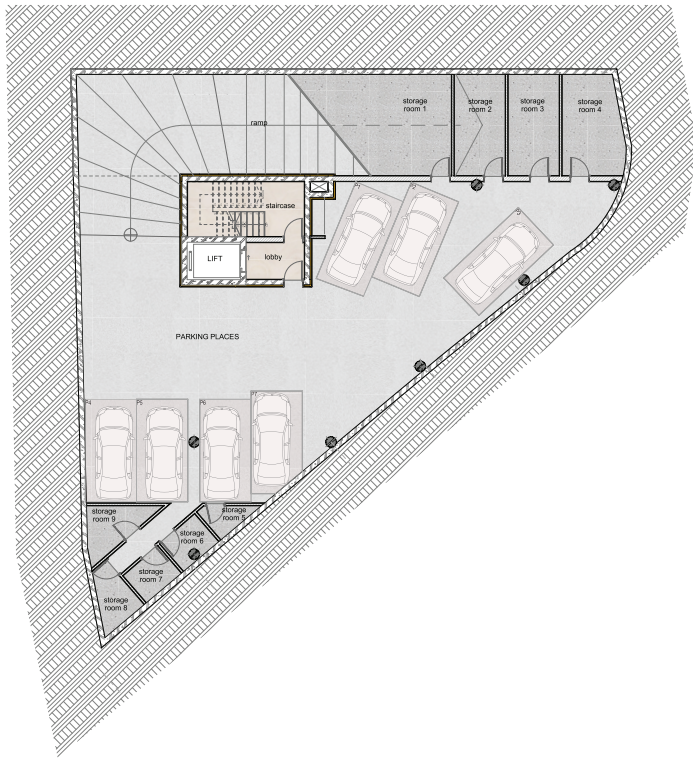
Type: Luxury Offices

Floors: 4 - Basement, Ground Floor & Mechanical floor, 1st floor, 2nd floor, 3rd floor, 4rth floor, Roof terrace.



Architectural Plans

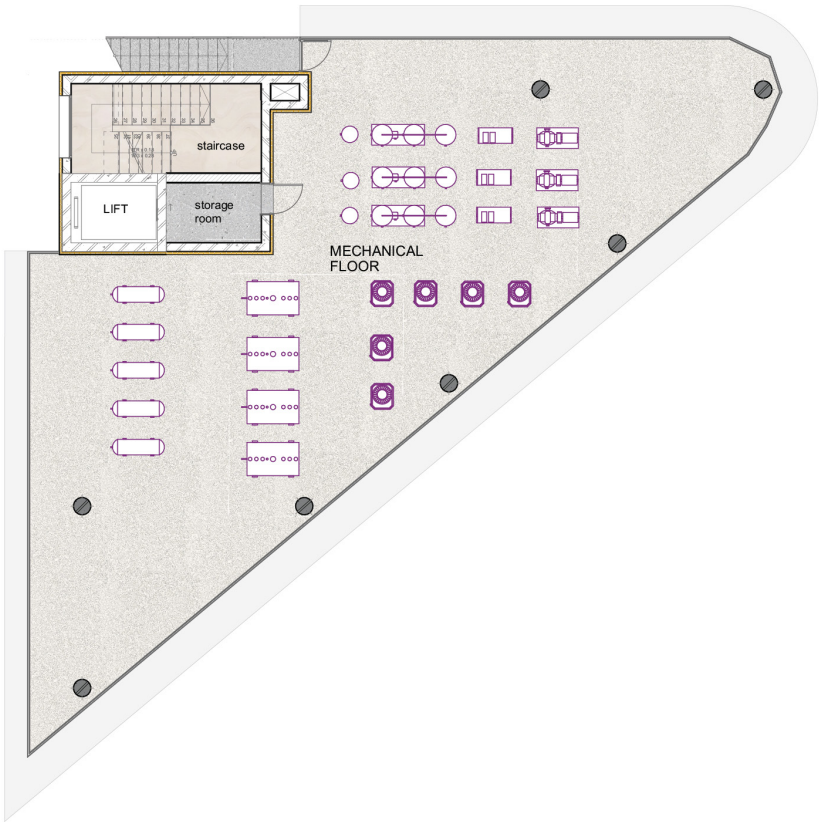
BASEMENT



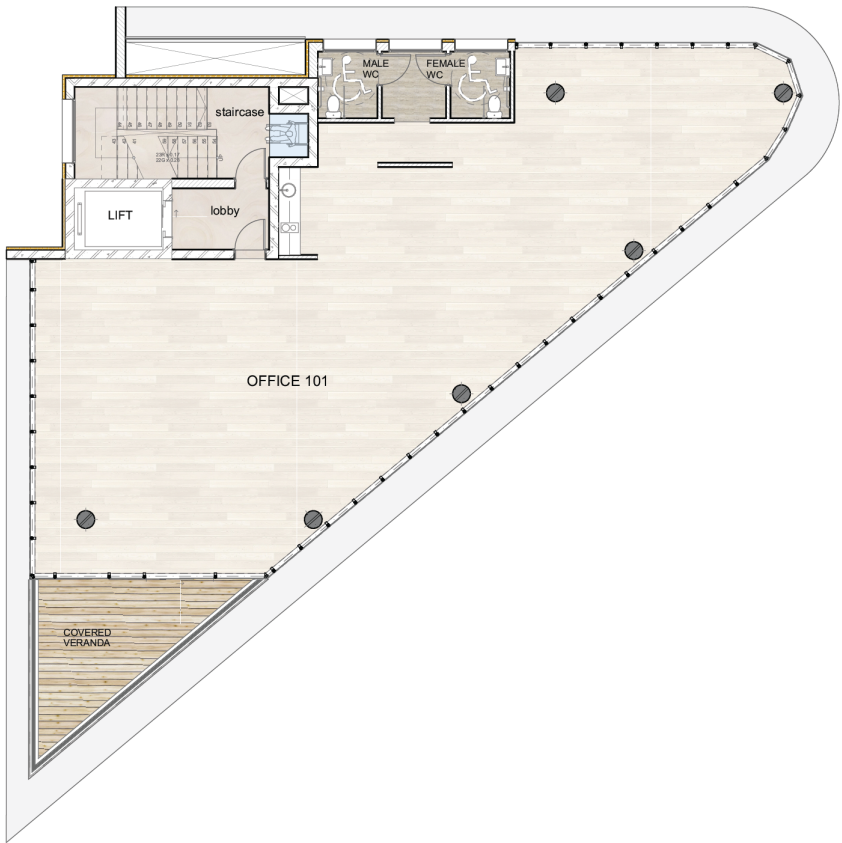
GROUND FLOOR



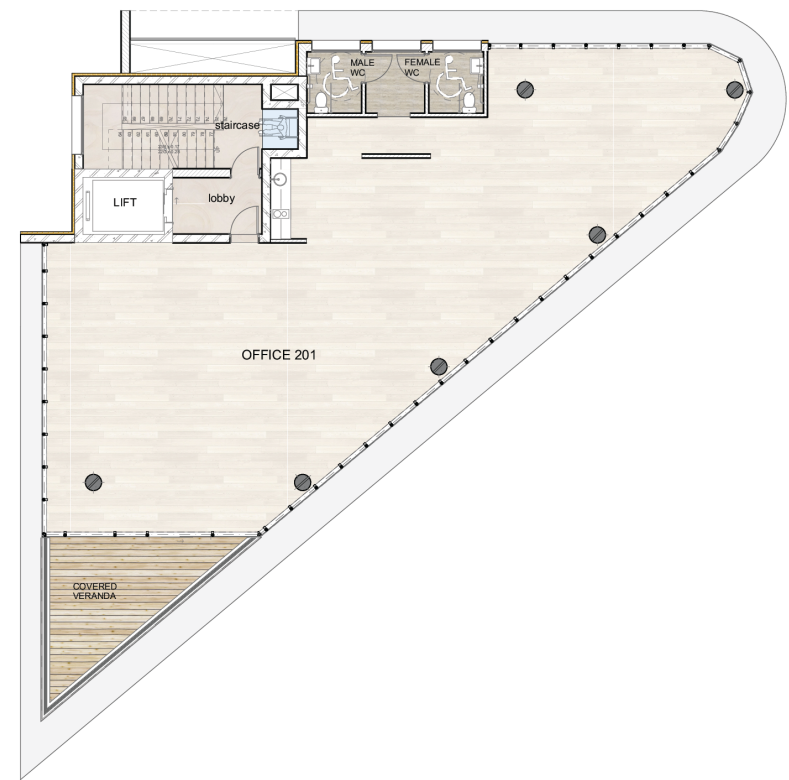
MECHANICAL



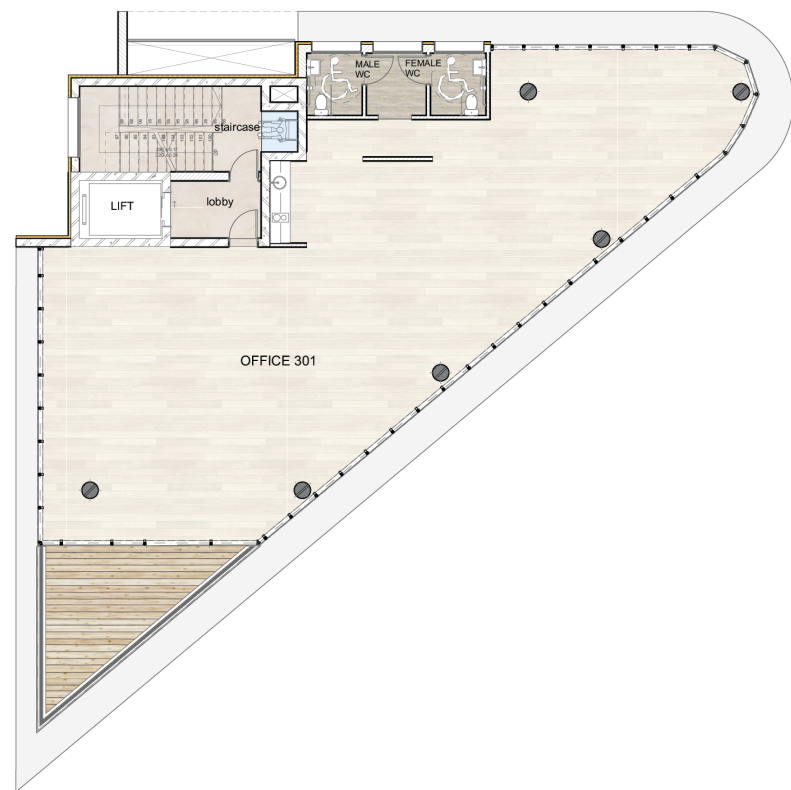
1ST FLOOR



2ND FLOOR



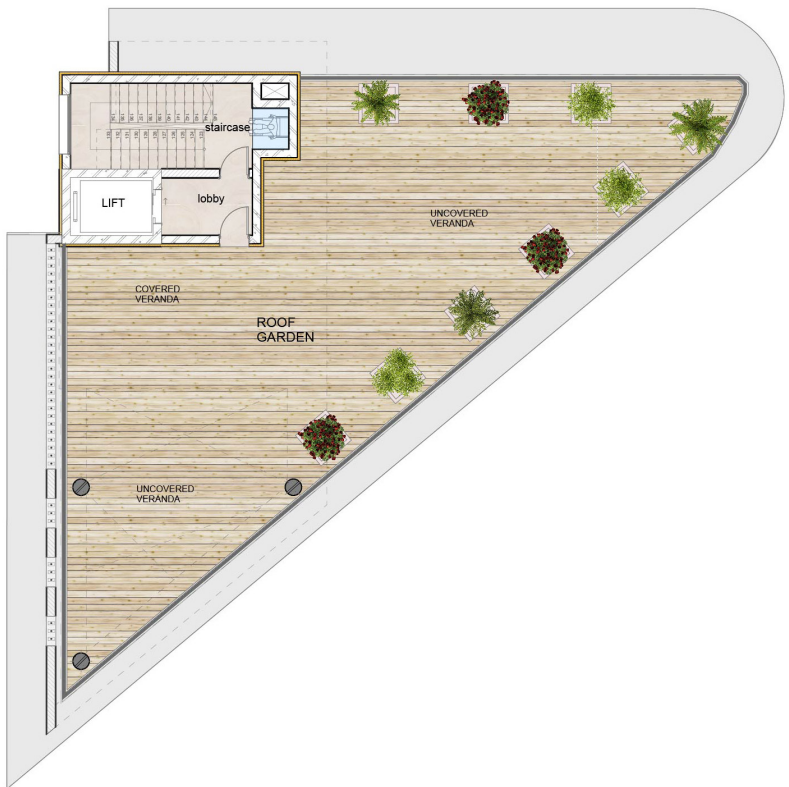
3RD FLOOR



4th FLOOR



ROOF GARDEN



OFFICES

AREAS/PRICE LIST											
Office No.	Floor	Internal Area (Net)	Covered Verandas	Communal	Total Covered Area	Uncovered Verandas	Store Rooms	Total Area	Parking Places	Availability	PRICE PER sqm
		[m²]	[m²]	[m²]	[m²]	[m²]	[m²]	[m²]		Euro + VAT	
0	Basement	0	0	277	277	0	104	381	7		
001	Ground Floor	0	0	55	55	0	0	55	9		
	Mechanical Floor	0	0	229	229	0	6	235	0		
101	1st Floor	189	19	167,25	375	0	26	401,25	4	€1,400,000.00	3,490.00
201	2nd Floor	189	19	167,25	375	0	26	401,25	4	€1,450,000.00	3,615.00
301	3rd Floor	189	19	167,25	375	0	26	401,25	4	€1,500,000.00	3,738.00
401	4th Floor	175	19	167,25	361	0	26	387,25	4	€1,700,000.00	4,595.00
	Roof-Terrace	0	39	29	68	137	0	205	0		
	Total	742	115	698	1,555	137	110	1,802	16		

cyres.com.cy

info@cyres.com

+357 77770456



cyresland

BUILDING TOMORROW, TODAY