

# CYRES RESIDENCE 01







## Who we are

CYRESLAND was established in 2018 and since then has become one of the leading players in the Construction industry in Limassol, Cyprus. We specialize in the provision of high-quality real estate development and Contracting services. Our experienced team of professionals are passionate about creating and delivering innovative solutions to meet the needs of our clients.

Our mission is to engage in issues that are of concern to individuals, families and communities through an uncompromising commitment to create outstanding living, work and leisure environments.





# CYRES RESIDENCE 01





# About: CYRES RESIDENCE 01

Nestled in the prestigious Germasogeia area, Cyres Residence 01 offers an experience of unparalleled luxury. Our meticulously crafted apartments, featuring 2 to 3 bedrooms, blend minimalist elegance with modern sophistication.

Each residence is adorned with exquisite attention to detail and superior-quality materials, ensuring a lifestyle of comfort and refinement. Discover your dream home with CYRES Land in the vibrant heart of Limassol.

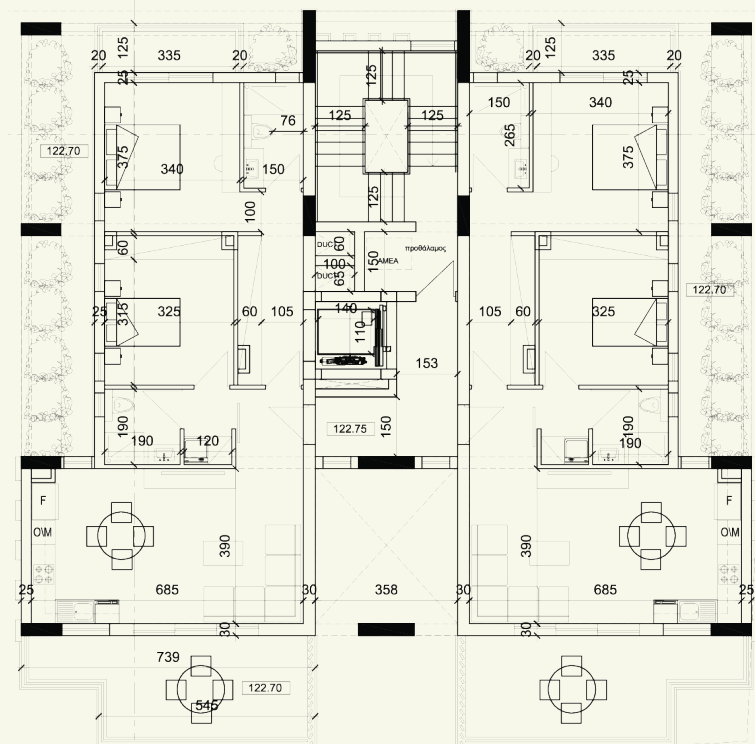
**Location:** Germasogeia, Limassol  
**Type:** Residence, Apartment building,  
2-3 bedrooms



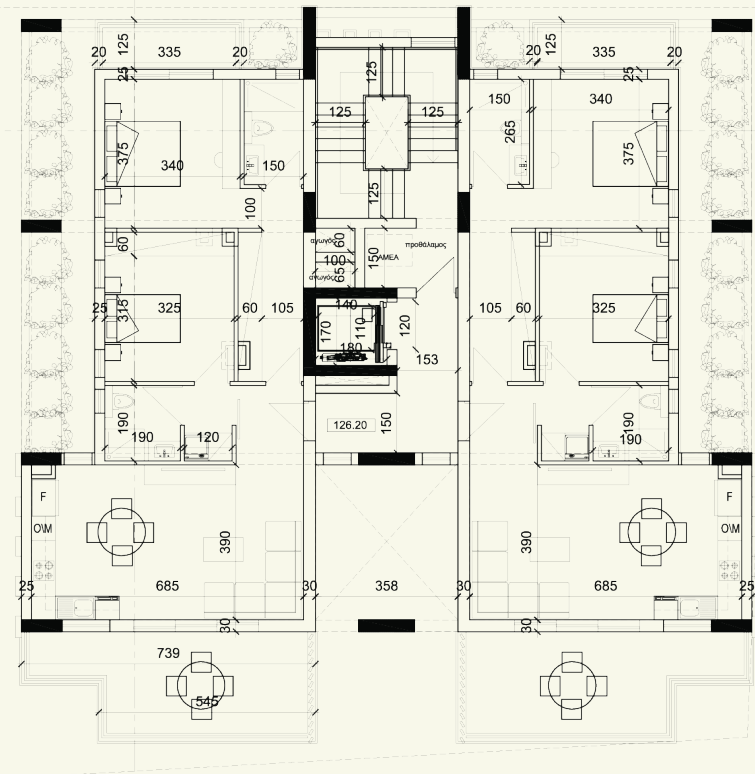


# Apartments

## 1<sup>ST</sup> FLOOR 101-102



## 2<sup>ND</sup> FLOOR 201-202



This new off-plan apartments are located in a family friendly Germasogeia neighbourhood, within close proximity a to a popular kindergarten.

This modern design apartments sits in a small residential building with only 6 apartments.

### Property Features



Open Plan Design



2 Bedrooms



2 Showers & 2 Toilets



Solar Photovoltaic System



Covered Area  
85.34m<sup>2</sup>



Covered Veranda  
22.19m<sup>2</sup>



Storage Area  
7m<sup>2</sup>



Covered Parking

- > Prime location
- > High quality finishes
- > Boule glazing windows with high quality aluminium
- > Lovely sea view
- > Energy class A efficiency

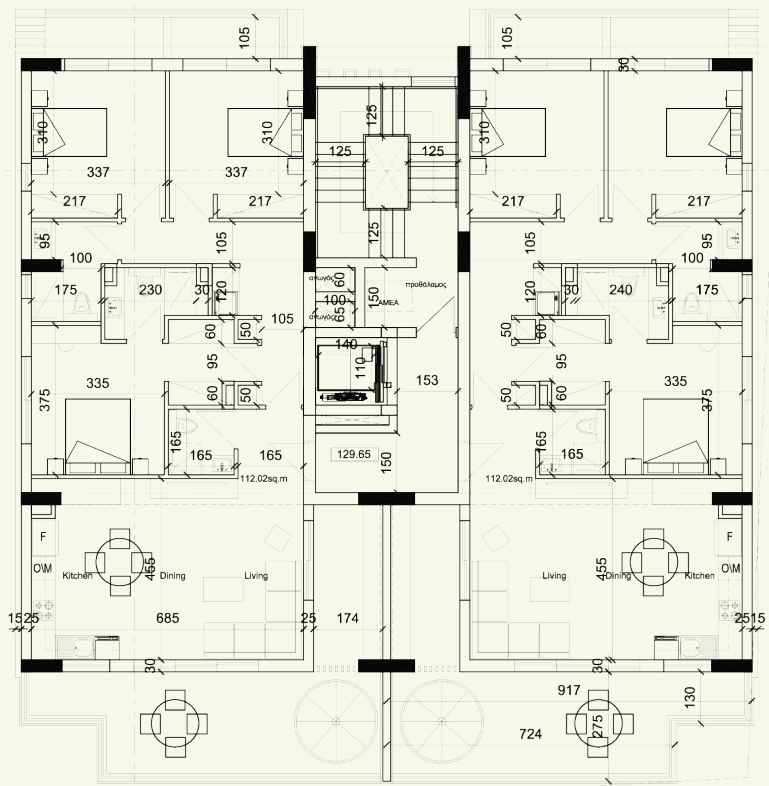
Delivery date **January 2026**



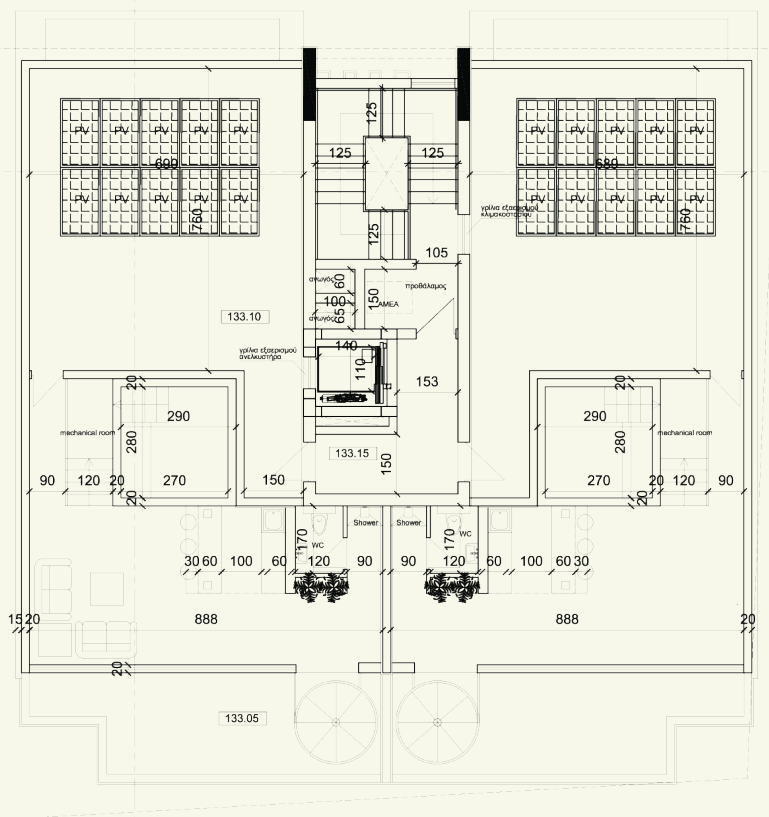
# Apartments

## PENTHOUSE

301-302



## ROOF TOP



This new off-plan 3 bedroom roof garden penthouse is located in a family friendly Germasogeia neighbourhood, within close proximity to a popular kindergarten.

This stunning dual-level design penthouse with wonderful sea views is spread over two-floors, with a luxurious roof garden spanning over 50 square metres. It consists of a living/dining area leading onto a veranda.

### Property Features



Open Plan Design



3 Spacious Bedrooms



2 Showers & 3 Toilets



Solar Photovoltaic System



Covered Area 112m<sup>2</sup>



Covered Veranda 34.56m<sup>2</sup>



Storage Area 20.70m<sup>2</sup>



Covered Parking



Roof Garden Area 58m<sup>2</sup>

- > Prime location
- > High quality finishes
- > Double glazing windows with high quality aluminium
- > Lovely sea view
- > Energy class A efficiency

Delivery date **January 2026**



CYRES RESIDENCE 01

AREAS/PRICE LIST

Flat Number	Apartment Type	Internal Area	Covered Veranda	Storages	Total Covered Area	Roof Garden's Covered Areas	Roof Garden's Uncovered Areas
		[m²]	[m²]	[m²]	[m²]	[m²]	[m²]
N.101	2 Bedrooms	85,34	22,19	6,70	114,23	0,00	0,00
N.102	2 Bedrooms	85,34	22,19	6,70	114,23	0,00	0,00
N.201	2 Bedrooms	85,34	22,19	6,70	114,23	0,00	0,00
N.202	2 Bedrooms	85,34	22,19	6,70	114,23	0,00	0,00
Penthouse 301	3 Bedrooms	112,02	34,56	20,70	167,28	7,72	49,55
Penthouse 302	3 Bedrooms	112,02	34,56	20,70	167,28	7,72	49,55





**cyres.com.cy**

info@cyres.com

+357 77770456



cyresland

**BUILDING TOMORROW, TODAY**